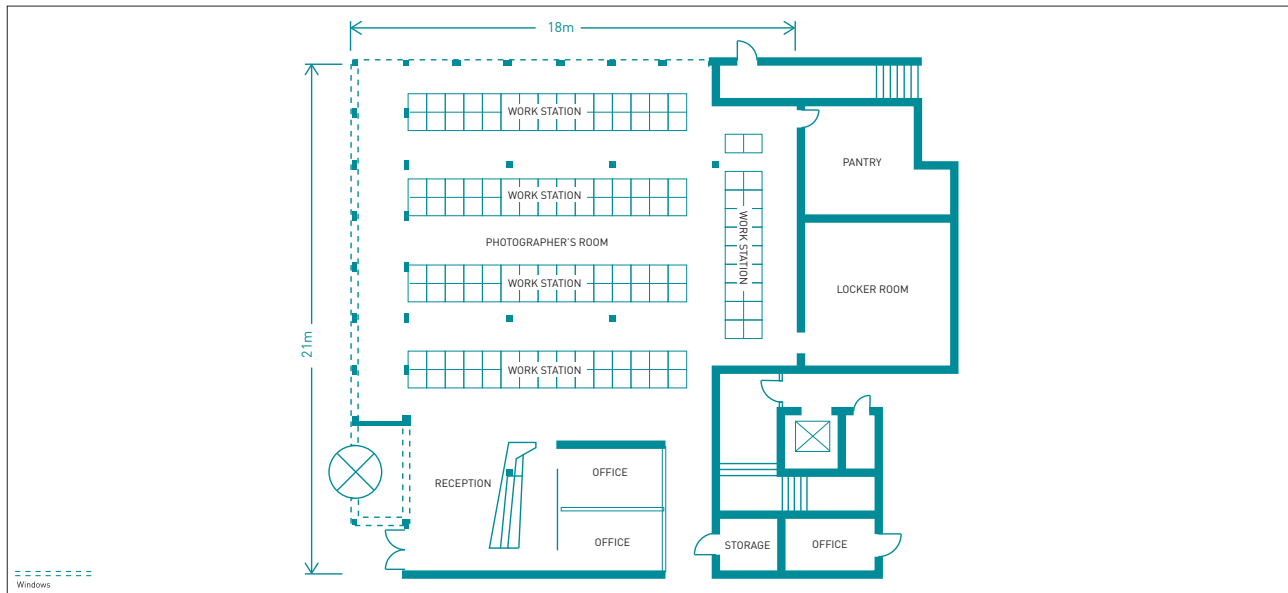


# YAS Events Centre

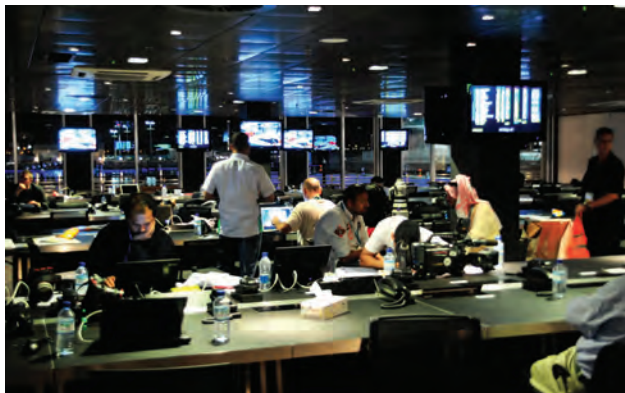
## Photographer's Room



YAS EVENTS CENTRE	AREA M <sup>2</sup>	BANQUET 10	COCKTAIL	CLASSROOM	THEATRE	U-SHAPE	CABARET
PRESS CONFERENCE	378	210	189	201	461	-	-

### VENUE SPECIFICATIONS

- Ceiling height 2.7m
- 200 Work stations with internet and phone line capability
- Multiple plasma television screens
- Reception and office space

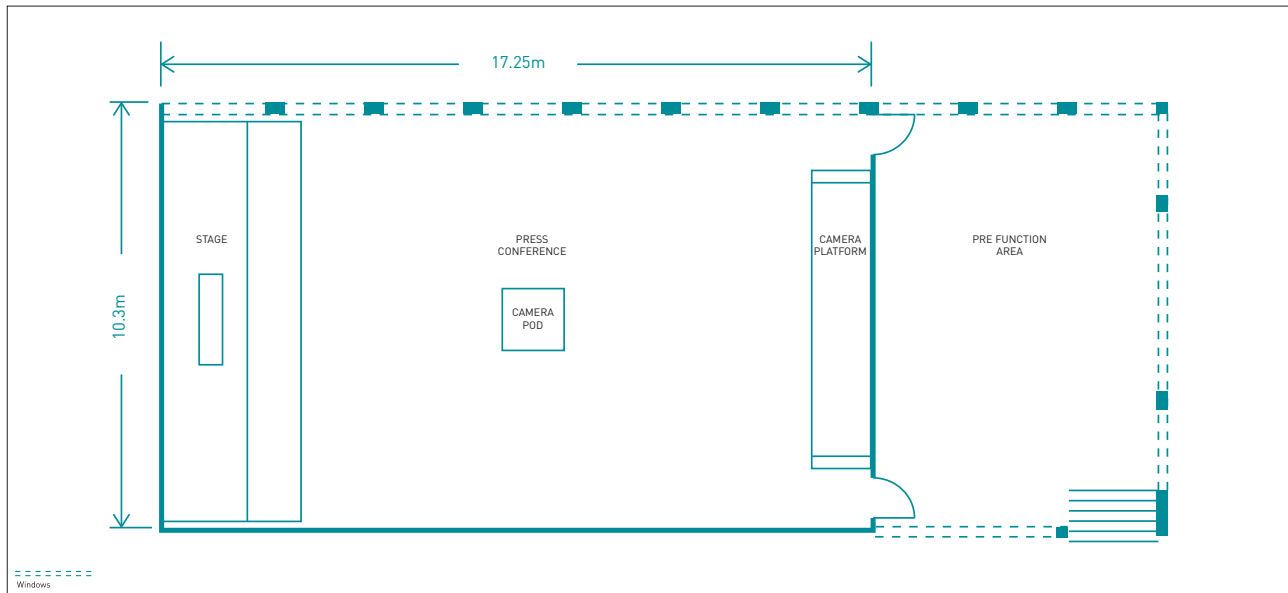


[www.yasmarinacircuit.com](http://www.yasmarinacircuit.com) for more information.



# YAS Events Centre

## Press Conference Room



YAS EVENTS CENTRE	AREA M <sup>2</sup>	BANQUET 10	COCKTAIL	CLASSROOM	THEATRE	U-SHAPE	CABARET
PRESS CONFERENCE	125	80	120	54	82	36	80

### VENUE SPECIFICATIONS

- Adjacent reception/Pre function area
- Built-in raised camera platform and stage
- Ground floor access
- Ceiling height 3.1m

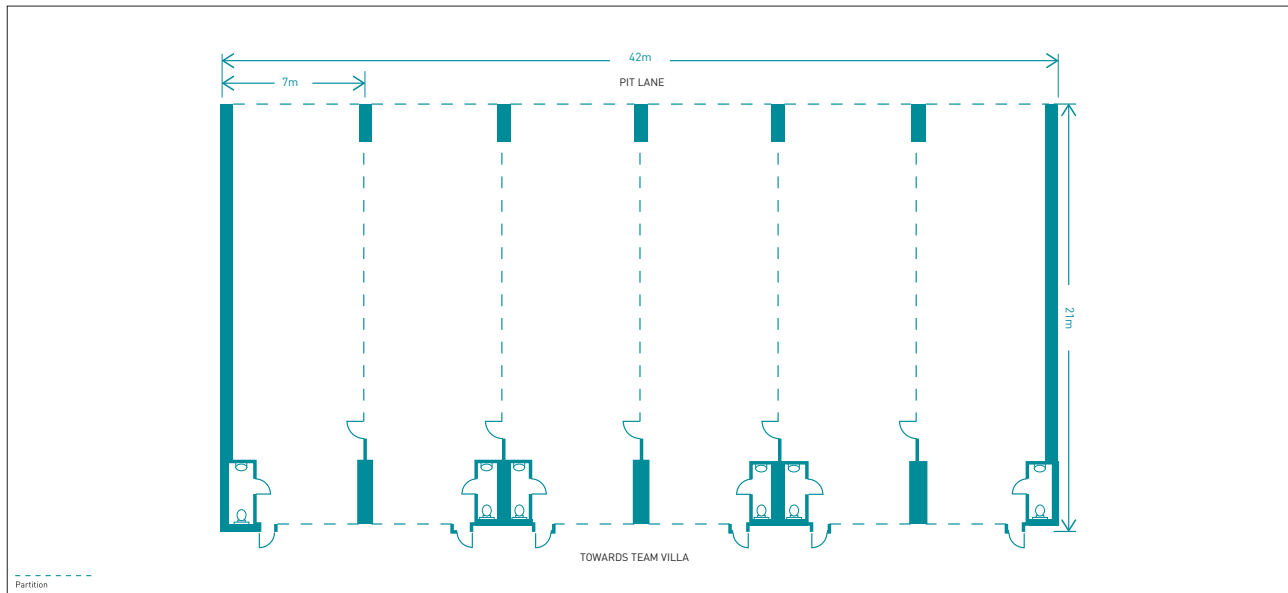


[www.yasmarinacircuit.com](http://www.yasmarinacircuit.com) for more information.



# YAS Events Paddock

## YAS Paddock Garages



YAS EVENTS CENTRE	AREA M <sup>2</sup>	BANQUET 10	COCKTAIL	CLASSROOM	THEATRE	U-SHAPE	CABARET
6 BAY GARAGES	895	260	900	234	461	-	-

### VENUE SPECIFICATIONS

- Ceiling height 3.2m
- Direct access to track
- Air conditioned
- Multiple branding opportunities

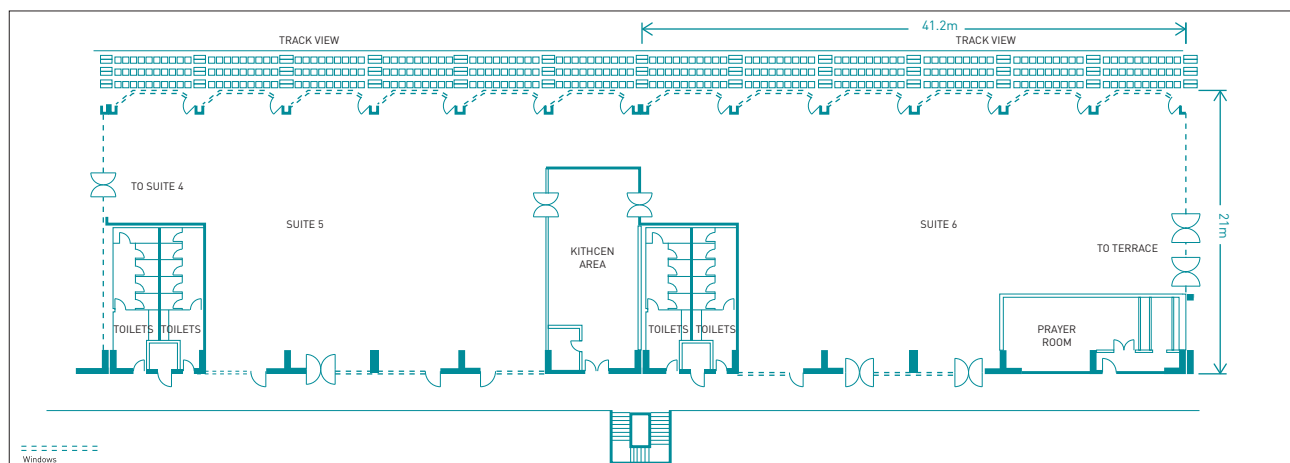
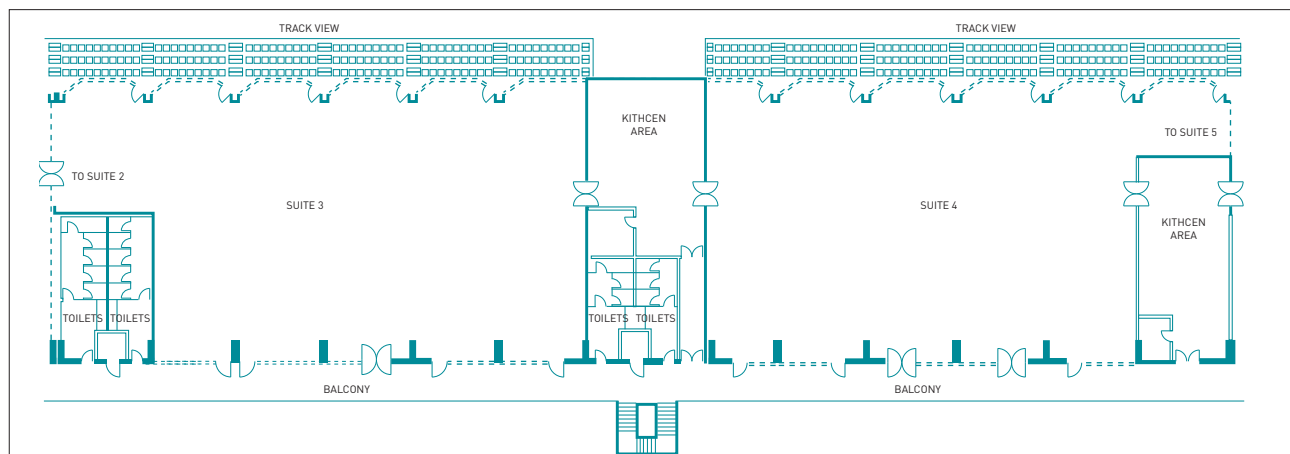
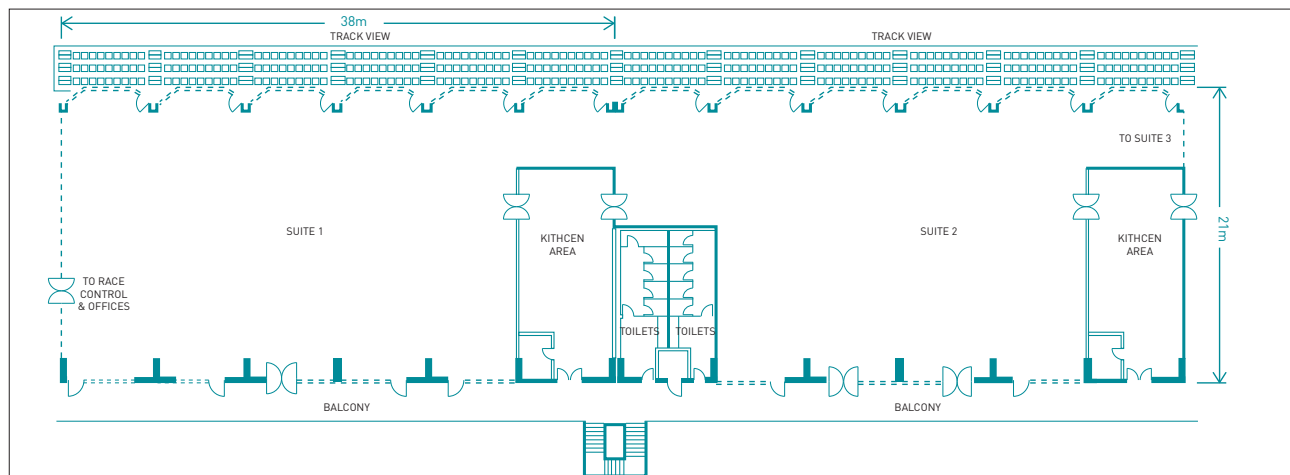


[www.yasmarinacircuit.com](http://www.yasmarinacircuit.com) for more information.



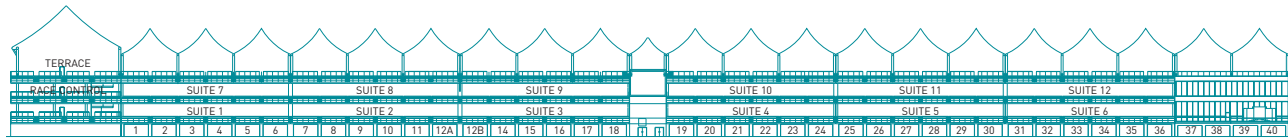
# YAS Events Paddock

## Paddock Suites



# YAS Events Paddock

## Paddock Suites



YAS EVENTS CENTRE	AREA M <sup>2</sup>	BANQUET 10	COCKTAIL	CLASSROOM	THEATRE	U-SHAPE	CABARET
SUITE 1	726	320	480	294	430	-	-
SUITE 6	783	260	575	216	406	-	-

### VENUE SPECIFICATIONS

- 12 corporate suites of varying sizes and layouts
- Fully equipped kitchen between each suite
- Lift and stairwell access
- Prayer rooms
- Track and Marina Views
- Rooftop terrace
- 2 suites with adjacent shaded outdoor terrace

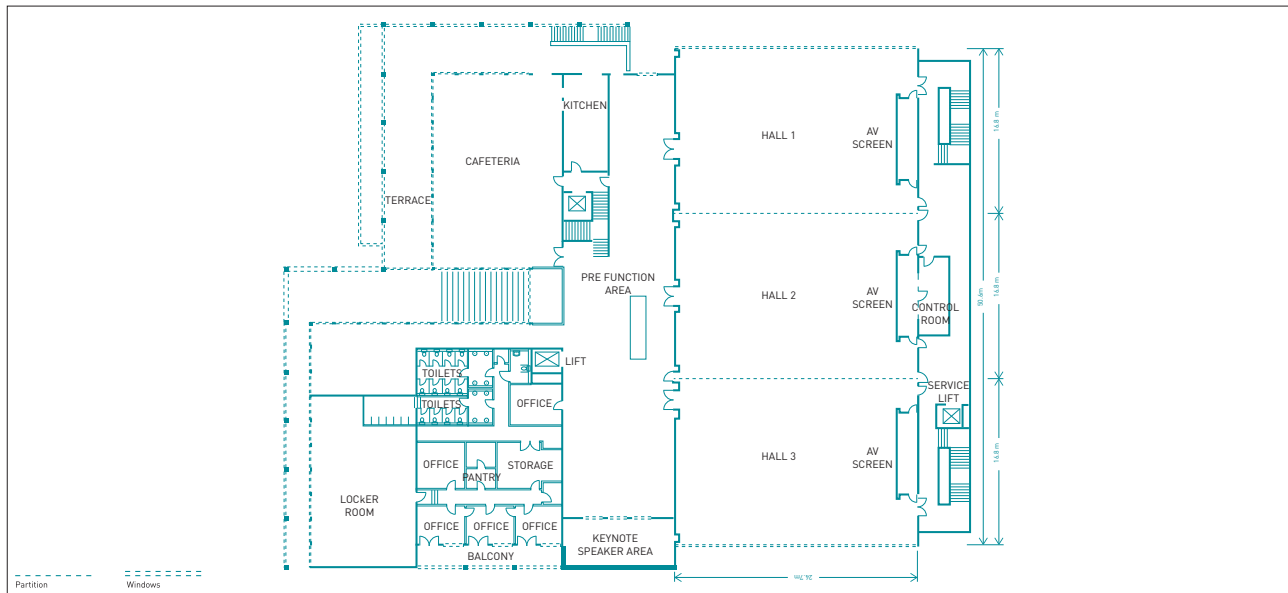


[www.yasmarinacircuit.com](http://www.yasmarinacircuit.com) for more information.



# YAS Events Centre

## F1 Halls



YAS EVENTS CENTRE	AREA M <sup>2</sup>	BANQUET 10	COCKTAIL	CLASSROOM	THEATRE	U-SHAPE	CABARET
HALLS 1,2,3	1,177	550	900	594	730	120	440
HALL 1	392	160	440	162	250	66	160
HALL 2	393	120	120	120	120	66	120
HALL 3	392	160	440	162	250	66	180

### VENUE SPECIFICATIONS

- Total space of 1,177m<sup>2</sup> – partitioned walling segregates the space into three halls
- Ceiling height 4.5m
- 3 built-in 8 x 2.4m AV screens
- In house PA system

- Adjacent to pre function area, reception, Keynote speakers waiting room and staff offices
- Elevator and stair access front of house, service elevators back of house
- Cafeteria and terrace with Marina View

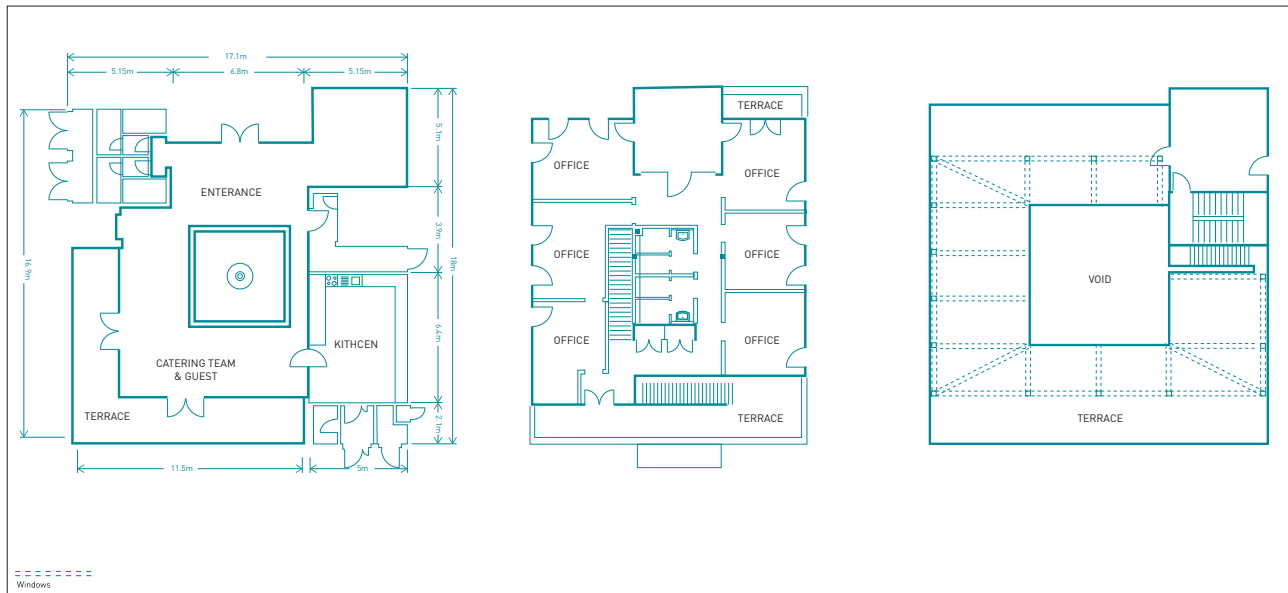


[www.yasmarinacircuit.com](http://www.yasmarinacircuit.com) for more information.



# YAS Events Paddock

## Team Villa



YAS EVENTS CENTRE	AREA M <sup>2</sup>	BANQUET 10	COCKTAIL	CLASSROOM	THEATRE	U-SHAPE	CABARET
SMALL	224 /floor	-	60	-	-	-	-
LARGE	289 /floor	-	70	-	-	-	-

### VENUE SPECIFICATIONS

- 18 villas of varying sizes
- Ceiling height 2.4m
- Fully equipped kitchen
- Fitted out with luxury furnishings
- Multiple office and meeting spaces
- Restrooms and shower facilities

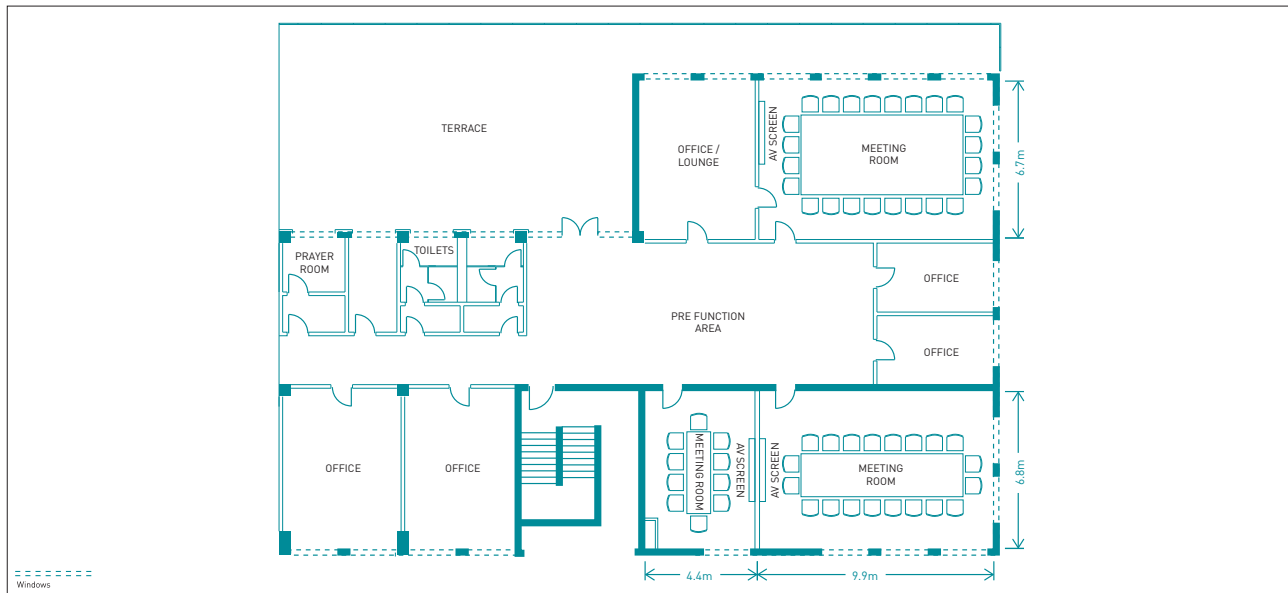


[www.yasmarinacircuit.com](http://www.yasmarinacircuit.com) for more information.



# YAS Events Centre

## Meeting Rooms



YAS EVENTS CENTRE	AREA M <sup>2</sup>	BOARDROOM	COCKTAIL	CLASSROOM	THEATRE	U-SHAPE	CABARET
LARGE	67	25	-	-	-	-	-
MEDIUM	66	20	-	-	-	-	-
SMALL	31	10	-	-	-	-	-

### VENUE SPECIFICATIONS

- Built-in AV screens
- Fitted with luxury furnishings
- Adjacent pre function area
- Multiple office spaces available
- Track view



[www.yasmarinacircuit.com](http://www.yasmarinacircuit.com) for more information.

